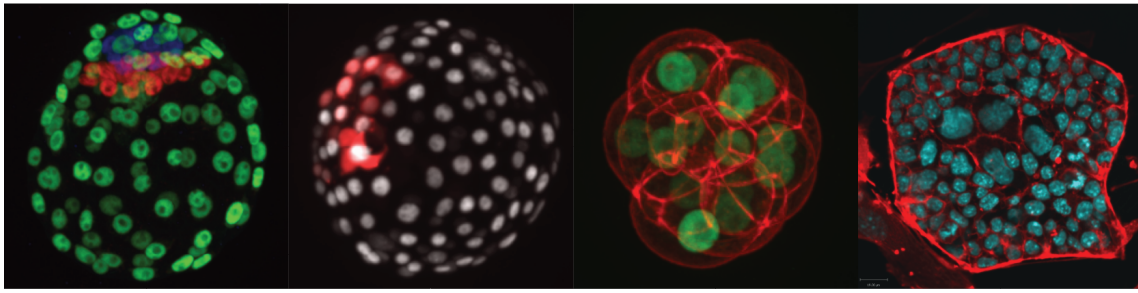


Postdoctoral position in Live Imaging Early Mammalian Development



The Posfai Lab (www.posfailab.org) at Princeton University is looking to recruit a highly motivated postdoctoral fellow. Our group studies the molecular and cellular mechanisms of cell fate choice and morphogenesis during early embryonic development, using the preimplantation mouse embryo as a model system. Our main approach is combining genetic engineering and quantitative, high-resolution live imaging using light sheet microscopy. The lab's assets include our recently developed highly efficient genome editing method in mouse embryos and our own light sheet microscope dedicated to preimplantation embryo imaging.

The postdoctoral candidate should have a strong interest in developmental biology and mouse genetics. Experience in light sheet microscopy and/or computational image analysis is preferred, but not necessary. Motivation and excellence is valued more than previous field of study.

The candidate will benefit from an interdisciplinary and collaborative environment at Princeton and the vibrant and supportive atmosphere of a junior lab. Researchers at the rank of Postdoctoral Research Associate are ordinarily appointed for one year at a time. Appointments are reviewed annually to consider reappointment and salary level. The position is benefits-eligible.

To apply, email your CV and cover letter explaining your interests and motivation to Eszter Posfai (eposfai@princeton.edu) and arrange for three reference letters to be sent on your behalf.

For more information, visit www.posfailab.org.